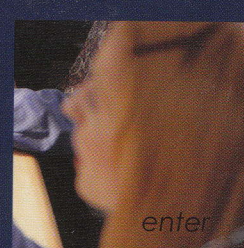
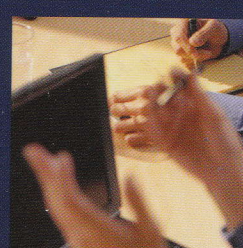
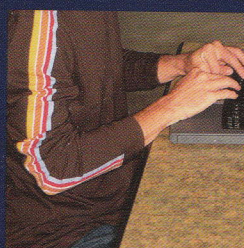
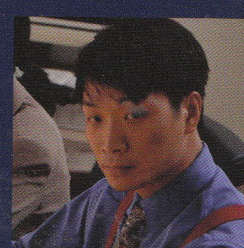
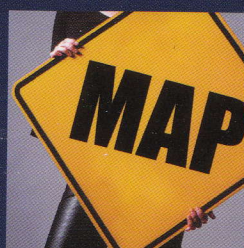
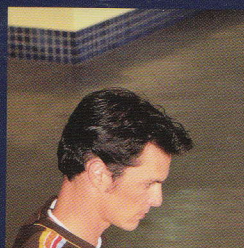




GREGG
College Keyboarding
& Document Processing

OBER
JOHNSON
ZIMMERLY



Lessons 1-60
10th Edition

3/11/11

PART TWO

Basic Business Documents



UNIT 4 KEYBOARDING: THE SYMBOLS	36
16 Symbol Keys: \$ () !	37
17 Review	39
18 Symbol Keys: * # '	41
19 Symbol Keys: & % " @	43
20 Review	46
UNIT 5 E-MAIL AND WORD PROCESSING	50
21 Orientation to Word Processing: A	51
22 Orientation to Word Processing: B	53
23 Orientation to Word Processing: C	55
24 Orientation to Word Processing: D	57
25 E-Mail Basics	59
<i>Correspondence 25-1: E-Mail Message</i>	
<i>Correspondence 25-2: E-Mail Message</i>	
UNIT 6 REPORTS	62
26 One-Page Business Reports	63
<i>Report 26-1: Business Report</i>	
<i>Report 26-2: Business Report</i>	
27 Multipage Rough-Draft Business Reports	67
<i>Report 27-3: Business Report</i>	
<i>Report 27-4: Business Report</i>	
28 Business Reports With Lists	72
<i>Report 28-5: Business Report</i>	
<i>Report 28-6: Business Report</i>	
29 Academic Reports	75
<i>Report 29-7: Academic Report</i>	
<i>Report 29-8: Academic Report</i>	
30 Academic Reports With Displays	79
<i>Report 30-9: Academic Report</i>	
<i>Report 30-10: Academic Report</i>	
UNIT 7 CORRESPONDENCE	83
31 Business Letters	84
<i>Correspondence 31-3: Business Letter in Block Style</i>	
<i>Correspondence 31-4: Business Letter in Block Style</i>	
<i>Correspondence 31-5: Business Letter in Block Style</i>	

32	Business Letters With Enclosure Notations	88
	<i>Correspondence 32-6: Business Letter in Block Style</i>	
	<i>Correspondence 32-7: Business Letter in Block Style</i>	
	<i>Correspondence 32-8: Business Letter in Block Style</i>	
33	Envelopes and Labels	92
	<i>Correspondence 33-9: Envelope</i>	
	<i>Correspondence 33-10: Envelope</i>	
	<i>Correspondence 33-11: Mailing Labels</i>	
	<i>Correspondence 33-12: Mailing Labels</i>	
	<i>Correspondence 33-13: Envelope</i>	
34	Memos	96
	<i>Correspondence 34-14: Memo</i>	
	<i>Correspondence 34-15: Memo</i>	
	<i>Correspondence 34-16: Memo</i>	
35	Correspondence Review	99
	<i>Correspondence 35-17: Memo</i>	
	<i>Correspondence 35-18: Memo</i>	
	<i>Correspondence 35-19: Business Letter in Block Style</i>	

UNIT 8 TABLES 102

36	Boxed Tables	103
	<i>Table 36-1: Boxed Table</i>	
	<i>Table 36-2: Boxed Table</i>	
	<i>Table 36-3: Boxed Table</i>	
	<i>Table 36-4: Boxed Table</i>	
37	Open Tables With Titles	106
	<i>Table 37-5: Open Table</i>	
	<i>Table 37-6: Open Table</i>	
	<i>Table 37-7: Open Table</i>	
38	Open Tables With Column Headings	109
	<i>Table 38-8: Open Table</i>	
	<i>Table 38-9: Open Table</i>	
	<i>Table 38-10: Open Table</i>	
	<i>Table 38-11: Open Table</i>	
39	Ruled Tables With Number Columns	112
	<i>Table 39-12: Ruled Table</i>	
	<i>Table 39-13: Ruled Table</i>	
	<i>Table 39-14: Ruled Table</i>	
40	Formatting Review	115
	<i>Report 40-11: Academic Report</i>	
	<i>Correspondence 40-20: Business Letter in Block Style</i>	
	<i>Table 40-15: Boxed Table</i>	

TEST 2 SKILLS ASSESSMENT ON PART 2 118

<i>Correspondence Test 2-21: Business Letter in Block Style</i>
<i>Report Test 2-12: Academic Report</i>
<i>Table Test 2-16: Boxed Table</i>

PART THREE: Reports, Correspondence, and Employment Documents



UNIT 9 REPORTS	122
41 Left-Bound Business Reports With Footnotes	123
<i>Report 41-13: Left-Bound Business Report</i>	
<i>Report 41-14: Left-Bound Business Report</i>	
42 Reports in APA Style	127
<i>Report 42-15: Report in APA Style</i>	
<i>Report 42-16: Report in APA Style</i>	
43 Reports in MLA Style	131
<i>Report 43-17: Report in MLA Style</i>	
<i>Report 43-18: Report in MLA Style</i>	
44 Report Citations	135
<i>Report 44-19: Bibliography</i>	
<i>Report 44-20: References in APA Style</i>	
<i>Report 44-21: Works Cited in MLA Style</i>	
45 Preliminary Report Pages	141
<i>Report 45-22: Title Page</i>	
<i>Report 45-23: Table of Contents</i>	
<i>Report 45-24: Title Page</i>	
<i>Report 45-25: Table of Contents</i>	
<i>Report 45-26: Business Report</i>	
UNIT 10 CORRESPONDENCE	147
46 Personal Titles and Complimentary Closings in Letters	148
<i>Correspondence 46-22: Business Letter in Block Style</i>	
<i>Correspondence 46-23: Business Letter in Block Style</i>	
47 Personal-Business Letters	151
<i>Correspondence 47-24: Personal-Business Letter in Block Style</i>	
<i>Correspondence 47-25: Personal-Business Letter in Block Style</i>	
<i>Correspondence 47-26: Personal-Business Letter in Block Style</i>	
48 Memos With Lists	155
<i>Correspondence 48-27: Memo</i>	
<i>Correspondence 48-28: Memo</i>	
<i>Correspondence 48-29: Memo</i>	
49 Letters With Copy Notations	158
<i>Correspondence 49-30: Business Letter in Block Style</i>	
<i>Correspondence 49-31: Business Letter in Block Style</i>	
50 Letters in Modified-Block Style	161
<i>Correspondence 50-32: Business Letter in Modified-Block Style</i>	
<i>Correspondence 50-33: Business Letter in Modified-Block Style</i>	
<i>Correspondence 50-34: Business Letter in Modified-Block Style</i>	
<i>Correspondence 50-35: Personal-Business Letter in Modified-Block Style</i>	

UNIT 11 EMPLOYMENT DOCUMENTS	167
51 Traditional Resumes	168
<i>Report 51-27: Resume in Traditional Style</i>	
<i>Report 51-28: Resume in Traditional Style</i>	
52 Electronic Resumes	173
<i>Report 52-29: Resume in Electronic Style</i>	
<i>Report 52-30: Resume in Electronic Style</i>	
53 Letters of Application	177
<i>Correspondence 53-36: Personal-Business Letter in Modified-Block Style</i>	
<i>Correspondence 53-37: Personal-Business Letter in Block Style</i>	
54 Follow-Up Letters	180
<i>Correspondence 54-38: Personal-Business Letter in Block Style</i>	
<i>Correspondence 54-39: Personal-Business Letter in Modified-Block Style</i>	
<i>Correspondence 54-40: Personal-Business Letter in Modified-Block Style</i>	
55 Integrated Employment Project	184
<i>Report 55-31: Resume in Traditional Style</i>	
<i>Correspondence 55-41: Personal-Business Letter in Block Style</i>	
<i>Correspondence 55-42: Personal-Business Letter in Modified-Block Style</i>	
<i>Correspondence 55-43: Personal-Business Letter in Block Style</i>	
<i>Correspondence 55-44: Personal-Business Letter in Modified-Block Style</i>	
UNIT 12 SKILLBUILDING AND IN-BASKET REVIEW	188
56 In-Basket Review (Insurance)	189
<i>Correspondence 56-45: Business Letter in Block Style</i>	
<i>Correspondence 56-46: Memo</i>	
<i>Table 56-17: Boxed Table</i>	
57 In-Basket Review (Hospitality)	193
<i>Table 57-18: Open Table</i>	
<i>Correspondence 57-47: Business Letter in Modified-Block Style</i>	
<i>Report 57-32: Business Report</i>	
58 In-Basket Review (Retail)	197
<i>Correspondence 58-48: Business Letter in Block Style</i>	
<i>Correspondence 58-49: Memo</i>	
<i>Table 58-19: Boxed Table</i>	
59 In-Basket Review (Nonprofit)	200
<i>Report 59-33: Business Report</i>	
<i>Table 59-20: Boxed Table</i>	
60 In-Basket Review (Manufacturing)	204
<i>Correspondence 60-50: Business Letter in Block Style</i>	
<i>Table 60-21: Boxed Table</i>	
<i>Correspondence 60-51: Memo</i>	
<i>Correspondence 60-52: Business Letter in Modified-Block Style</i>	
<i>Table 60-22: Boxed Table</i>	