

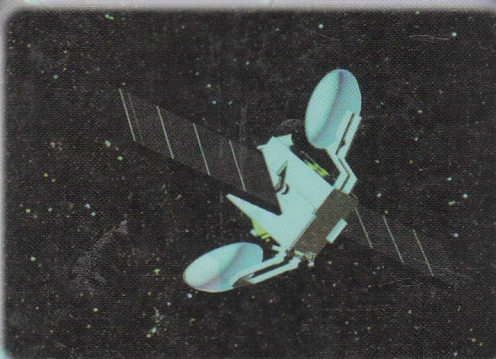
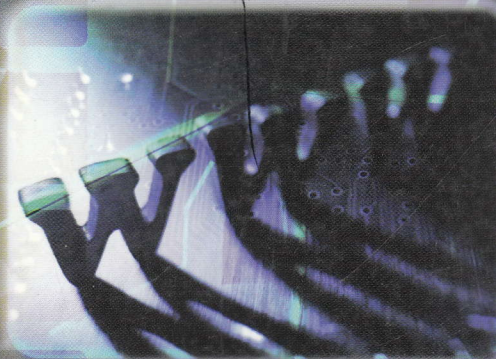
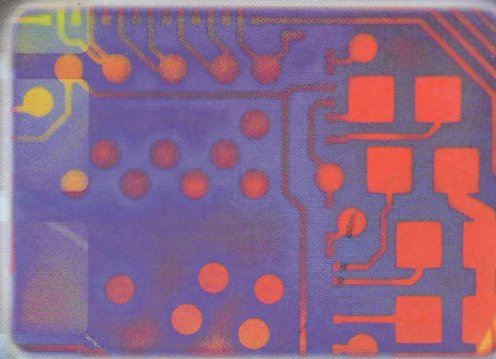
SECOND EDITION

# DIGITAL COMMUNICATIONS

IAN A. GLOVER

PETER M. GRANT

PEARSON  
Prentice  
Hall





# Contents

Preface	xix
Acknowledgements	xxi
List of abbreviations	xxiii
List of principal symbols	xxxviii

## 1 Digital communications overview, 1

- 1.1 Electronic communications, 1
- 1.2 Sources and sinks of information, 4
- 1.3 Digital communications equipment, 6
  - 1.3.1 CODECs, 6
  - 1.3.2 *Source, security and error control coding*, 7
  - 1.3.3 *Multiplexers*, 7
  - 1.3.4 MODEMs, 8
  - 1.3.5 *Multiple accessing*, 8
- 1.4 Radio receivers, 8
- 1.5 Signal transmission, 9
  - 1.5.1 *Line transmission*, 10
  - 1.5.2 *Radio transmission*, 12
- 1.6 Switching and networks, 15
- 1.7 Advantages of digital communications, 15
- 1.8 Summary, 16

## Part One Signals and systems theory, 19

### 2 Periodic and transient signals, 21

- 2.1 Introduction, 21
- 2.2 Periodic signals, 22
  - 2.2.1 *Sinusoids, cisoids and phasors*, 22
  - 2.2.2 *Fourier series*, 27
  - 2.2.3 *Conditions for existence, convergence and Gibbs's phenomenon*, 41
  - 2.2.4 *Bandwidth, rates of change, sampling and aliasing*, 44
- 2.3 Transient signals, 47
  - 2.3.1 *Fourier transforms*, 47
  - 2.3.2 *Practical calculation of Fourier transforms*, 49
  - 2.3.3 *Fourier transform pairs*, 51

- 2.3.4 *Fourier transform theorems and convolution*, 56
- 2.4 Power and energy spectra, 66
- 2.5 Generalised orthogonal function expansions, 67
  - 2.5.1 *Review of vectors*, 67
  - 2.5.2 *Vector interpretation of waveforms*, 70
  - 2.5.3 *Orthogonal and orthonormal signals*, 72
  - 2.5.4 *Evaluation of basis function coefficients*, 74
  - 2.5.5 *Error energy and completeness*, 75
- 2.6 Correlation functions, 77
- 2.7 Summary, 83
- 2.8 Problems, 84

### 3 Random signals and noise, 86

- 3.1 Introduction, 86
- 3.2 Probability theory, 86
  - 3.2.1 *Conditional probabilities, joint probabilities and Bayes's rule*, 88
  - 3.2.2 *Statistical independence*, 89
  - 3.2.3 *Discrete probability of errors in a data block*, 90
  - 3.2.4 *Cumulative distributions and probability density functions*, 92
  - 3.2.5 *Moments, percentiles and modes*, 96
  - 3.2.6 *Joint and marginal pdfs, correlation and covariance*, 101
  - 3.2.7 *Joint moments, correlation and covariance*, 104
  - 3.2.8 *Joint Gaussian random variables*, 107
  - 3.2.9 *Addition of random variables and the central limit theorem*, 108
- 3.3 Random processes, 112
  - 3.3.1 *Stationarity and ergodicity*, 114
  - 3.3.2 *Strict and loose sense Gaussian processes*, 115
  - 3.3.3 *Autocorrelation and power spectral density*, 116
  - 3.3.4 *Signal memory, decorrelation time and white noise*, 121
  - 3.3.5 *Cross correlation of random processes*, 122
- 3.4 Summary, 123
- 3.5 Problems, 124

### 4 Linear systems, 128

- 4.1 Introduction, 128
- 4.2 Linear systems, 128
  - 4.2.1 *Properties of linear systems*, 129
  - 4.2.2 *Importance of linear systems*, 130
- 4.3 Time domain description of linear systems, 133
  - 4.3.1 *Linear differential equations*, 133
  - 4.3.2 *Discrete signals and matrix algebra*, 134
  - 4.3.3 *Continuous signals, convolution and impulse response*, 134
  - 4.3.4 *Physical interpretation of  $y(t) = h(t) * x(t)$* , 137
  - 4.3.5 *Step response*, 138
- 4.4 Frequency domain description, 141
- 4.5 Causality and the Hilbert transform, 144

- 4.6 Random signals and linear systems, 147
  - 4.6.1 *Power spectral densities and linear systems*, 147
  - 4.6.2 *Noise bandwidth*, 149
  - 4.6.3 *Pdf of filtered noise*, 149
  - 4.6.4 *Spectrum analysers*, 151
- 4.7 Non-linear systems and transformation of random variables, 152
  - 4.7.1 *Rayleigh pdf*, 153
  - 4.7.2 *Chi-square distributions*, 155
- 4.8 Summary, 156
- 4.9 Problems, 157

## Part Two Digital communications principles, 161

### 5 Sampling, multiplexing and PCM, 163

- 5.1 Introduction, 163
- 5.2 Pulse modulation, 163
- 5.3 Sampling, 165
  - 5.3.1 *Natural and flat topped sampling*, 166
  - 5.3.2 *Baseband sampling and Nyquist's criterion*, 167
  - 5.3.3 *Aliasing*, 168
  - 5.3.4 *Practical sampling, reconstruction and signal to distortion ratio*, 169
  - 5.3.5 *Bandpass sampling*, 173
- 5.4 Analogue pulse multiplexing, 176
- 5.5 Quantised PAM, 179
- 5.6 Signal to quantisation noise ratio ( $SN_qR$ ), 181
- 5.7 Pulse code modulation, 183
  - 5.7.1  *$SN_qR$  for linear PCM*, 183
  - 5.7.2 *SNR for decoded PCM*, 185
  - 5.7.3 *Companded PCM*, 188
  - 5.7.4 *PCM multiplexing*, 191
- 5.8 Bandwidth reduction techniques, 192
  - 5.8.1 *Delta PCM*, 193
  - 5.8.2 *Differential PCM*, 193
  - 5.8.3 *Adaptive DPCM*, 195
  - 5.8.4 *Delta modulation*, 196
  - 5.8.5 *Adaptive delta modulation*, 199
- 5.9 Summary, 201
- 5.10 Problems, 202

### 6 Baseband transmission and line coding, 204

- 6.1 Introduction, 204
- 6.2 Baseband centre point detection, 204
  - 6.2.1 *Baseband binary error rates in Gaussian noise*, 205
  - 6.2.2 *Multilevel baseband signalling*, 209
- 6.3 Error accumulation over multiple hops, 211

- 6.4 Line coding, 214
  - 6.4.1 *Unipolar signalling*, 217
  - 6.4.2 *Polar signalling*, 219
  - 6.4.3 *Dipolar signalling*, 219
  - 6.4.4 *Bipolar alternate mark inversion signalling*, 219
  - 6.4.5 *Pulse synchronisation and HDBn coding*, 220
  - 6.4.6 *Coded mark inversion (CMI)*, 220
  - 6.4.7 *nBmT coding*, 220
- 6.5 Multiplex telephony, 221
- 6.6 Digital signal regeneration, 222
  - 6.6.1 *PCM line codes*, 223
  - 6.6.2 *Equalisation*, 224
  - 6.6.3 *Eye diagrams*, 226
  - 6.6.4 *Crosstalk*, 227
- 6.7 Symbol timing recovery, 230
- 6.8 Repeater design, 232
- 6.9 Digital transmission in local loop, 232
- 6.10 Summary, 236
- 6.11 Problems, 236

## 7 Decision theory, 238

- 7.1 Introduction, 238
- 7.2 A priori, conditional and a posteriori probabilities, 239
- 7.3 Symbol transition matrix, 240
  - 7.3.1 *Binary symmetric channel*, 240
- 7.4 Bayes's decision criterion, 243
  - 7.4.1 *Decision costs*, 243
  - 7.4.2 *Expected conditional decision costs*, 243
  - 7.4.3 *Optimum decision rule*, 243
  - 7.4.4 *Optimum decision threshold voltage*, 245
  - 7.4.5 *Average unconditional decision cost*, 246
- 7.5 Neyman–Pearson decision criterion, 249
- 7.6 Summary, 250
- 7.7 Problems, 251

## 8 Optimum filtering for transmission and reception, 253

- 8.1 Introduction, 253
- 8.2 Pulse shaping for optimum transmissions, 253
  - 8.2.1 *Intersymbol interference (ISI)*, 254
  - 8.2.2 *Bandlimiting of rectangular pulses*, 254
  - 8.2.3 *ISI-free signals*, 255
  - 8.2.4 *Nyquist's vestigial symmetry theorem*, 259
  - 8.2.5 *Raised cosine filtering*, 260
  - 8.2.6 *Nyquist filtering for rectangular pulses*, 263
  - 8.2.7 *Duobinary signalling*, 263
  - 8.2.8 *Partial response signalling*, 270



- 8.3 Pulse filtering for optimum reception, 271
  - 8.3.1 *Matched filtering*, 272
  - 8.3.2 *Correlation detection*, 276
  - 8.3.3 *Decision instant SNR*, 281
  - 8.3.4 *BER performance of optimum receivers*, 284
  - 8.3.5 *Comparison of baseband matched filtering and centre point detection*, 286
  - 8.3.6 *Differences between matched filtering and correlation*, 287
- 8.4 Root raised cosine filtering, 287
- 8.5 Equalisation, 289
- 8.6 Summary, 292
- 8.7 Problems, 293

## 9 Information theory, source coding and encryption, 295

- 9.1 Introduction, 295
- 9.2 Information and entropy, 296
  - 9.2.1 *The information measure*, 296
  - 9.2.2 *Multisymbol alphabets*, 297
  - 9.2.3 *Commonly confused entities*, 298
  - 9.2.4 *Entropy of a binary source*, 298
- 9.3 Conditional entropy and redundancy, 299
- 9.4 Information loss due to noise, 302
- 9.5 Source coding, 305
  - 9.5.1 *Code efficiency*, 305
  - 9.5.2 *Decoding variable length codewords*, 306
- 9.6 Variable length coding, 308
  - 9.6.1 *Huffman coding*, 308
- 9.7 Source coding examples, 310
  - 9.7.1 *Source coding for speech signals*, 311
  - 9.7.2 *High quality speech coders*, 314
  - 9.7.3 *Audio coders*, 315
  - 9.7.4 *String coding*, 318
- 9.8 Data encryption, 319
  - 9.8.1 *The locked box analogy*, 319
  - 9.8.2 *Secrecy*, 320
  - 9.8.3 *Substitution and permutation*, 321
  - 9.8.4 *Confusion, diffusion and the unicity distance*, 322
  - 9.8.5 *Block ciphers and stream ciphers*, 324
  - 9.8.6 *Product ciphers*, 325
  - 9.8.7 *Data encryption standard*, 326
  - 9.8.8 *Public key encryption*, 334
  - 9.8.9 *Hash functions and OEAP*, 339
  - 9.8.10 *Hybrid public key/private key encryption and PGP*, 340
- 9.9 Authentication, 342
- 9.10 Integrity, 342
- 9.11 Digital signatures, 342

9.12 Summary, 343

9.13 Problems, 345

## 10 Error control coding, 347

10.1 Introduction, 347

10.1.1 *Error rate control concepts*, 349

10.1.2 *Threshold phenomenon*, 351

10.1.3 *Applications for error control*, 351

10.2 Hamming distance and codeword weight, 351

10.3  $(n, k)$  block codes, 352

10.3.1 *Single parity check code*, 352

10.4 Probability of error in  $n$ -digit codewords, 356

10.5 Linear group codes, 356

10.5.1 *Members of the group code family*, 357

10.5.2 *Performance prediction*, 357

10.5.3 *Error detection and correction capability*, 358

10.6 Nearest neighbour decoding of block codes, 359

10.6.1 *Hamming bound*, 359

10.7 Syndrome decoding, 360

10.7.1 *The generator matrix*, 360

10.7.2 *Syndrome table for error correction*, 361

10.8 Cyclic codes, 364

10.8.1 *Polynomial codeword generation*, 365

10.8.2 *Interleaving*, 368

10.9 Encoding of convolutional codes, 369

10.9.1 *Tree diagram representation*, 370

10.9.2 *Trellis diagram*, 371

10.9.3 *State transition diagram*, 371

10.10 Viterbi decoding of convolutional codes, 372

10.10.1 *Decoding window*, 375

10.10.2 *Sequential decoding*, 376

10.11 Practical coders, 377

10.12 Concatenated coding and turbo codes, 378

10.12.1 *Serially concatenated codes*, 379

10.12.2 *Parallel-concatenated recursive systematic convolutional codes*, 380

10.12.3 *Turbo decoding*, 382

10.12.4 *Turbo code performance*, 385

10.12.5 *Other applications of the turbo principle*, 386

10.13 Summary, 386

10.14 Problems, 388

## 11 Bandpass modulation of a carrier signal, 390

11.1 Introduction, 390

11.2 Spectral and power efficiency, 391

11.3 Binary IF modulation, 391

11.3.1 *Binary amplitude shift keying (and on-off keying)*, 391

- 11.3.2 *Binary phase shift keying (and phase reversal keying)*, 395
- 11.3.3 *Binary frequency shift keying*, 399
- 11.3.4 *BFSK symbol correlation and Sunde's FSK*, 402
- 11.3.5 *Comparison of binary shift keying techniques*, 405
- 11.3.6 *Carrier recovery, phase ambiguity and DPSK*, 408
- 11.4 *Modulation techniques with increased spectral efficiency*, 410
  - 11.4.1 *Channel capacity*, 411
  - 11.4.2 *M-symbol phase shift keying*, 412
  - 11.4.3 *Amplitude/phase keying and quadrature amplitude modulation*, 416
  - 11.4.4 *Quadrature phase shift keying (QPSK) and offset QPSK*, 422
  - 11.4.5 *Minimum shift keying*, 428
  - 11.4.6 *Gaussian MSK*, 432
  - 11.4.7 *Trellis coded modulation*, 434
- 11.5 *Power efficient modulation techniques*, 437
  - 11.5.1 *Multidimensional signalling and MFSK*, 437
  - 11.5.2 *Orthogonal frequency division multiplex (OFDM)*, 442
  - 11.5.3 *Optimum constellation point packing*, 445
  - 11.5.4 *Optimum constellation point boundaries*, 445
- 11.6 *Data modems*, 446
- 11.7 *Summary*, 448
- 11.8 *Problems*, 449

## 2 **System noise and communications link budgets, 451**

- 12.1 *Introduction*, 451
- 12.2 *Physical aspects of noise*, 451
  - 12.2.1 *Thermal noise*, 452
  - 12.2.2 *Non-thermal noise*, 456
  - 12.2.3 *Combining white noise sources*, 458
- 12.3 *System noise calculations*, 462
  - 12.3.1 *Noise temperature*, 463
  - 12.3.2 *Noise temperature of cascaded subsystems*, 464
  - 12.3.3 *Noise factor and noise figure*, 467
- 12.4 *Radio communication link budgets*, 470
  - 12.4.1 *Antenna gain, effective area and efficiency*, 470
  - 12.4.2 *Free space and plane earth signal budgets*, 475
  - 12.4.3 *Antenna temperature and radio noise budgets*, 481
  - 12.4.4 *Receiver equivalent input CNR*, 484
  - 12.4.5 *Multipath fading and diversity reception*, 485
- 12.5 *Fibre optic transmission links*, 487
  - 12.5.1 *Fibre types*, 488
  - 12.5.2 *Fibre transmission systems*, 490
  - 12.5.3 *Optical sources*, 491
  - 12.5.4 *Optical detectors*, 491
  - 12.5.5 *Optical amplifiers*, 491
  - 12.5.6 *Optical repeater and link budgets*, 493
  - 12.5.7 *Optical FDM*, 495



- 12.5.8 *Optical signal routers*, 495
- 12.6 Summary, 495
- 12.7 Problems, 496

### **13 Communication systems simulation, 499**

- 13.1 Introduction, 499
- 13.2 Equivalent complex baseband representations, 501
  - 13.2.1 *Equivalent baseband signals*, 501
  - 13.2.2 *Equivalent baseband systems*, 502
  - 13.2.3 *Equivalent baseband system output*, 504
  - 13.2.4 *Equivalent baseband noise*, 508
- 13.3 Sampling and quantisation, 511
  - 13.3.1 *Sampling equivalent baseband signals*, 511
  - 13.3.2 *Quantisation*, 513
- 13.4 Modelling of signals, noise and systems, 513
  - 13.4.1 *Random numbers*, 513
  - 13.4.2 *Random digital symbol streams*, 515
  - 13.4.3 *Noise and interference*, 519
  - 13.4.4 *Time invariant linear systems*, 520
  - 13.4.5 *Non-linear and time varying systems*, 521
- 13.5 Transformation between time and frequency domains, 522
  - 13.5.1 *DFT*, 523
  - 13.5.2 *DFS*, 525
  - 13.5.3 *DFS spectrum and rearrangement of spectral lines*, 525
  - 13.5.4 *Conservation of information*, 526
  - 13.5.5 *Phasor interpretation of DFS*, 526
  - 13.5.6 *Inverse DFS and DFT*, 527
  - 13.5.7 *DFT accuracy*, 528
- 13.6 Discrete and cyclical convolution, 534
- 13.7 Estimation of BER, 537
  - 13.7.1 *Monte Carlo simulation*, 537
  - 13.7.2 *Quasi-analytic simulation*, 539
- 13.8 Summary, 545

## **Part Three Applications, 547**

### **14 Fixed-point microwave communications, 549**

- 14.1 Introduction, 549
- 14.2 Terrestrial microwave links, 549
  - 14.2.1 *Analogue systems*, 551
  - 14.2.2 *Digital systems*, 552
  - 14.2.3 *LOS link design*, 554
  - 14.2.4 *Other propagation considerations for terrestrial links*, 563
- 14.3 Fixed-point satellite communications, 570
  - 14.3.1 *Satellite frequency bands and orbital spacing*, 572
  - 14.3.2 *Earth station look angles and satellite range*, 573

- 14.3.3 *Satellite link budgets*, 575
- 14.3.4 *Slant path propagation considerations*, 581
- 14.3.5 *Analogue FDM/FM/FDMA trunk systems*, 587
- 14.3.6 *Digital TDM/PSK/TDMA trunk systems*, 591
- 14.3.7 *DA-TDMA, DSI and random access systems*, 596
- 14.3.8 *Economics of satellite communications*, 597
- 14.3.9 *VSAT systems*, 597
- 14.3.10 *Satellite switched TDMA and onboard signal processing*, 597
- 14.4 *Summary*, 598
- 14.5 *Problems*, 600

## **15 Mobile and cellular radio, 603**

- 15.1 *Introduction*, 603
  - 15.1.1 *Private mobile radio*, 603
  - 15.1.2 *Radio paging systems*, 605
- 15.2 *Mobile radio link budget and channel characteristics*, 605
  - 15.2.1 *Prediction of median signal strength*, 606
  - 15.2.2 *Slow and fast fading*, 608
  - 15.2.3 *Dispersion, frequency selective fading and coherence bandwidth*, 609
  - 15.2.4 *Multipath modelling and simulation*, 610
- 15.3 *Nationwide cellular radio communications*, 612
  - 15.3.1 *Introduction*, 612
  - 15.3.2 *Personal cordless communications*, 613
  - 15.3.3 *Analogue cellular radio communication*, 614
  - 15.3.4 *Cell sizes*, 614
  - 15.3.5 *System configuration*, 617
- 15.4 *Digital TDMA terrestrial cellular systems*, 617
  - 15.4.1 *TDMA systems*, 617
  - 15.4.2 *TDMA data format and modulation*, 619
  - 15.4.3 *Speech and channel coding*, 620
  - 15.4.4 *Other operational constraints*, 621
  - 15.4.5 *Trunked radio for paramilitary use*, 622
- 15.5 *Code division multiple access (CDMA)*, 622
  - 15.5.1 *The CDMA concept*, 622
  - 15.5.2 *CDMA receiver design*, 624
  - 15.5.3 *Spreading sequence design*, 627
  - 15.5.4 *Data modulation*, 631
  - 15.5.5 *CDMA multipath processing*, 631
  - 15.5.6 *The cdmaOne system*, 632
  - 15.5.7 *Frequency hopped transmission*, 636
- 15.6 *Mobile satellite based systems*, 638
- 15.7 *Third generation mobile cellular standards*, 640
  - 15.7.1 *Mobile data transmission*, 640
  - 15.7.2 *3G developments*, 641
  - 15.7.3 *Wideband CDMA*, 642
- 15.8 *Summary*, 643

15.9 Problems, 644

**16 Video transmission and storage, 645**

- 16.1 Introduction, 645
- 16.2 Colour representation, 646
- 16.3 Conventional TV transmission systems, 648
  - 16.3.1 *PAL encoding*, 648
  - 16.3.2 *PAL television receiver*, 650
  - 16.3.3 *Other encoding schemes*, 651
- 16.4 High definition TV, 651
  - 16.4.1 *What is HDTV?*, 651
  - 16.4.2 *Studio standards*, 652
  - 16.4.3 *Transmissions*, 653
- 16.5 Digital video, 653
- 16.6 Video data compression, 655
  - 16.6.1 *Run length coding*, 656
  - 16.6.2 *Conditional replenishment*, 656
  - 16.6.3 *Transform coding*, 656
- 16.7 Compression standards, 658
  - 16.7.1 *COST 211*, 658
  - 16.7.2 *JPEG*, 659
  - 16.7.3 *MPEG-1 and MPEG-2*, 661
  - 16.7.4 *MPEG-4*, 662
  - 16.7.5 *MPEG-7*, 664
  - 16.7.6 *H.261 and H.263*, 664
  - 16.7.7 *Model based coding*, 665
- 16.8 Digital video broadcast, 666
- 16.9 Packet video, 667
- 16.10 Summary, 669
- 16.11 Problems, 670

**Part Four Networks, 671**

**17 Network applications, topologies and architecture, 673**

- 17.1 Introduction, 673
- 17.2 Network applications, 674
- 17.3 Network function, 676
- 17.4 Network classification, 676
- 17.5 Switched network topologies and representation, 678
  - 17.5.1 *Star or hub*, 679
  - 17.5.2 *Tree*, 680
  - 17.5.3 *Mesh*, 680
  - 17.5.4 *Matrix representation*, 680
- 17.6 Generic network switching philosophies, 682
  - 17.6.1 *Circuit switching*, 682
  - 17.6.2 *Message switching*, 683



- 17.6.3 *Packet switching*, 684
- 17.7 Broadcast network topologies, 686
  - 17.7.1 *Bus or multidrop*, 686
  - 17.7.2 *Passive ring*, 687
  - 17.7.3 *Active ring*, 688
- 17.8 Transmission media, 689
- 17.9 Interconnected networks, 690
- 17.10 User and provider network views, 691
- 17.11 Connection-oriented and connectionless services, 694
- 17.12 Layered network architectures, 694
  - 17.12.1 *ISO OSI protocol reference model*, 696
  - 17.12.2 *Network layers in use*, 699
- 17.13 Summary, 700
- 17.14 Problems, 701

## 18 Network protocols, 703

- 18.1 Introduction, 703
- 18.2 Physical layer, 703
  - 18.2.1 *A physical layer protocol – X.21*, 704
- 18.3 Data-link layer, 708
  - 18.3.1 *Synchronisation*, 709
  - 18.3.2 *Error control*, 712
  - 18.3.3 *Flow control*, 726
  - 18.3.4 *A data-link protocol – HDLC*, 729
- 18.4 Network layer, 732
  - 18.4.1 *Routing*, 733
  - 18.4.2 *Congestion control*, 739
  - 18.4.3 *Error control*, 740
  - 18.4.4 *Quality of service*, 740
  - 18.4.5 *A connection-oriented network level protocol – X.25 PLP*, 740
  - 18.4.6 *A connectionless network level protocol (CLNP)*, 744
  - 18.4.7 *Use of primitives*, 749
- 18.5 Transport layer, 752
  - 18.5.1 *Message segmentation and reassembly*, 752
  - 18.5.2 *Multiplexing and parallel virtual circuit transmission*, 752
  - 18.5.3 *End-to-end error and flow control*, 753
  - 18.5.4 *Use of well known and ephemeral ports*, 753
  - 18.5.5 *A transport level protocol – TP4*, 754
- 18.6 Session layer, 758
  - 18.6.1 *Session connection, maintenance and release*, 758
  - 18.6.2 *Dialogue supervision*, 759
  - 18.6.3 *Recovery*, 759
  - 18.6.4 *A session level protocol – ISO-SP*, 759
- 18.7 Presentation layer, 764
  - 18.7.1 *Translation between local and transfer syntaxes*, 764
  - 18.7.2 *Abstract syntax notation 1 (ASN.1)*, 764

- 17.6.3 *Packet switching*, 684
- 17.7 Broadcast network topologies, 686
  - 17.7.1 *Bus or multidrop*, 686
  - 17.7.2 *Passive ring*, 687
  - 17.7.3 *Active ring*, 688
- 17.8 Transmission media, 689
- 17.9 Interconnected networks, 690
- 17.10 User and provider network views, 691
- 17.11 Connection-oriented and connectionless services, 694
- 17.12 Layered network architectures, 694
  - 17.12.1 *ISO OSI protocol reference model*, 696
  - 17.12.2 *Network layers in use*, 699
- 17.13 Summary, 700
- 17.14 Problems, 701

## **18 Network protocols, 703**

- 18.1 Introduction, 703
- 18.2 Physical layer, 703
  - 18.2.1 *A physical layer protocol – X.21*, 704
- 18.3 Data-link layer, 708
  - 18.3.1 *Synchronisation*, 709
  - 18.3.2 *Error control*, 712
  - 18.3.3 *Flow control*, 726
  - 18.3.4 *A data-link protocol – HDLC*, 729
- 18.4 Network layer, 732
  - 18.4.1 *Routing*, 733
  - 18.4.2 *Congestion control*, 739
  - 18.4.3 *Error control*, 740
  - 18.4.4 *Quality of service*, 740
  - 18.4.5 *A connection-oriented network level protocol – X.25 PLP*, 740
  - 18.4.6 *A connectionless network level protocol (CLNP)*, 744
  - 18.4.7 *Use of primitives*, 749
- 18.5 Transport layer, 752
  - 18.5.1 *Message segmentation and reassembly*, 752
  - 18.5.2 *Multiplexing and parallel virtual circuit transmission*, 752
  - 18.5.3 *End-to-end error and flow control*, 753
  - 18.5.4 *Use of well known and ephemeral ports*, 753
  - 18.5.5 *A transport level protocol – TP4*, 754
- 18.6 Session layer, 758
  - 18.6.1 *Session connection, maintenance and release*, 758
  - 18.6.2 *Dialogue supervision*, 759
  - 18.6.3 *Recovery*, 759
  - 18.6.4 *A session level protocol – ISO-SP*, 759
- 18.7 Presentation layer, 764
  - 18.7.1 *Translation between local and transfer syntaxes*, 764
  - 18.7.2 *Abstract syntax notation 1 (ASN.1)*, 764

- 18.7.3 *A presentation level protocol – ISO-PP*, 765
- 18.8 Application layer, 765
- 18.9 Non-ISO protocol stacks, 766
- 18.10 Summary, 766
- 18.11 Problems, 768

## **19 Network performance using queueing theory (M. E. Woodward), 770**

- 19.1 Introduction, 770
  - 19.1.1 *The arrival process*, 771
  - 19.1.2 *Queueing systems*, 774
- 19.2 The M/M/1 queue, 775
  - 19.2.1 *The equilibrium probabilities*, 775
  - 19.2.2 *Performance measures*, 777
- 19.3 The M/M/1/N queue, 779
  - 19.3.1 *General Markovian queueing equations*, 781
  - 19.3.2 *The M/M/N/N queue*, 785
  - 19.3.3 *The M/M/N/N/K queue*, 787
  - 19.3.4 *M/M/N/N+J queue (Erlang-C equation)*, 788
  - 19.3.5 *Distribution of waiting times*, 791
- 19.4 M/M/N/K/K queue: queueing behaviour in a mobile communication system, 792
  - 19.4.1 *Speech source model*, 793
  - 19.4.2 *Equilibrium probability*, 793
- 19.5 Summary, 795
- 19.6 Problems, 796

## **20 Switched networks and WANs, 798**

- 20.1 Introduction, 798
- 20.2 WAN characteristics and classification, 799
- 20.3 Application of graph theory to core networks, 801
  - 20.3.1 *Topology, cost and capacity matrices*, 801
  - 20.3.2 *Network capacity*, 803
  - 20.3.3 *Network connectivity*, 808
- 20.4 The UK public network, 811
  - 20.4.1 *The traditional analogue network*, 811
  - 20.4.2 *The modern digital network*, 813
- 20.5 Multiplexing, 815
  - 20.5.1 *The plesiochronous digital hierarchy*, 817
  - 20.5.2 *SDH and SONET*, 824
- 20.6 Circuit switching, 835
  - 20.6.1 *Space switching*, 836
  - 20.6.2 *Time switching*, 837
  - 20.6.3 *Time-space-time and space-time-space switching*, 838
  - 20.6.4 *Multi-stage space switches*, 840
  - 20.6.5 *Switch connectivity*, 845
  - 20.6.6 *Concentration and expansion*, 845



- 20.6.7 *Switch design*, 846
- 20.6.8 *Probability of blocking*, 849
- 20.6.9 *Circuit switched data over the PSTN*, 851
- 20.7 Packet switching, 854
  - 20.7.1 *Packet switched data over the PDN*, 856
  - 20.7.2 *Frame relay*, 861
- 20.8 Integrated services digital network (ISDN), 862
  - 20.8.1 *ISDN structure*, 862
  - 20.8.2 *Basic and primary rate access*, 863
  - 20.8.3 *ISDN services*, 865
- 20.9 Signalling, 865
  - 20.9.1 *In-channel and common channel signalling*, 867
  - 20.9.2 *Signalling system No. 7*, 868
- 20.10 Asynchronous transfer mode and the broadband ISDN, 871
  - 20.10.1 *Transport mechanism*, 871
  - 20.10.2 *Service classes*, 873
  - 20.10.3 *Connection admission control*, 874
  - 20.10.4 *Access protocols*, 875
  - 20.10.5 *Synchronous versus asynchronous transfer modes*, 875
  - 20.10.6 *ATM versus IP*, 877
- 20.11 Access technologies, 877
  - 20.11.1 *Digital subscriber line*, 877
  - 20.11.2 *Fibre*, 881
  - 20.11.3 *Cable*, 884
  - 20.11.4 *Broadband fixed wireless access*, 891
  - 20.11.5 *Comparison of access network technologies*, 903
  - 20.11.6 *Convergence of access network services*, 906
- 20.12 Summary, 907
- 20.13 Problems, 909

## 21 Broadcast networks and LANs, 912

- 21.1 Introduction, 912
- 21.2 LAN topologies, 913
- 21.3 LAN protocol stack, 913
  - 21.3.1 *Fixed access multiplexing*, 914
  - 21.3.2 *Polling*, 914
  - 21.3.3 *Token passing*, 914
  - 21.3.4 *Contention*, 915
- 21.4 Popular wired LAN standards, 916
  - 21.4.1 *Ethernet (IEEE 802.3)*, 917
  - 21.4.2 *Token ring (IEEE 802.5)*, 928
- 21.5 Wireless LANs, 934
  - 21.5.1 *WLAN (IEEE 802.11)*, 935
  - 21.5.2 *HIPERLAN*, 943
- 21.6 Wireless personal area networks, 946
  - 21.6.1 *Bluetooth (IEEE 802.15.1)*, 947